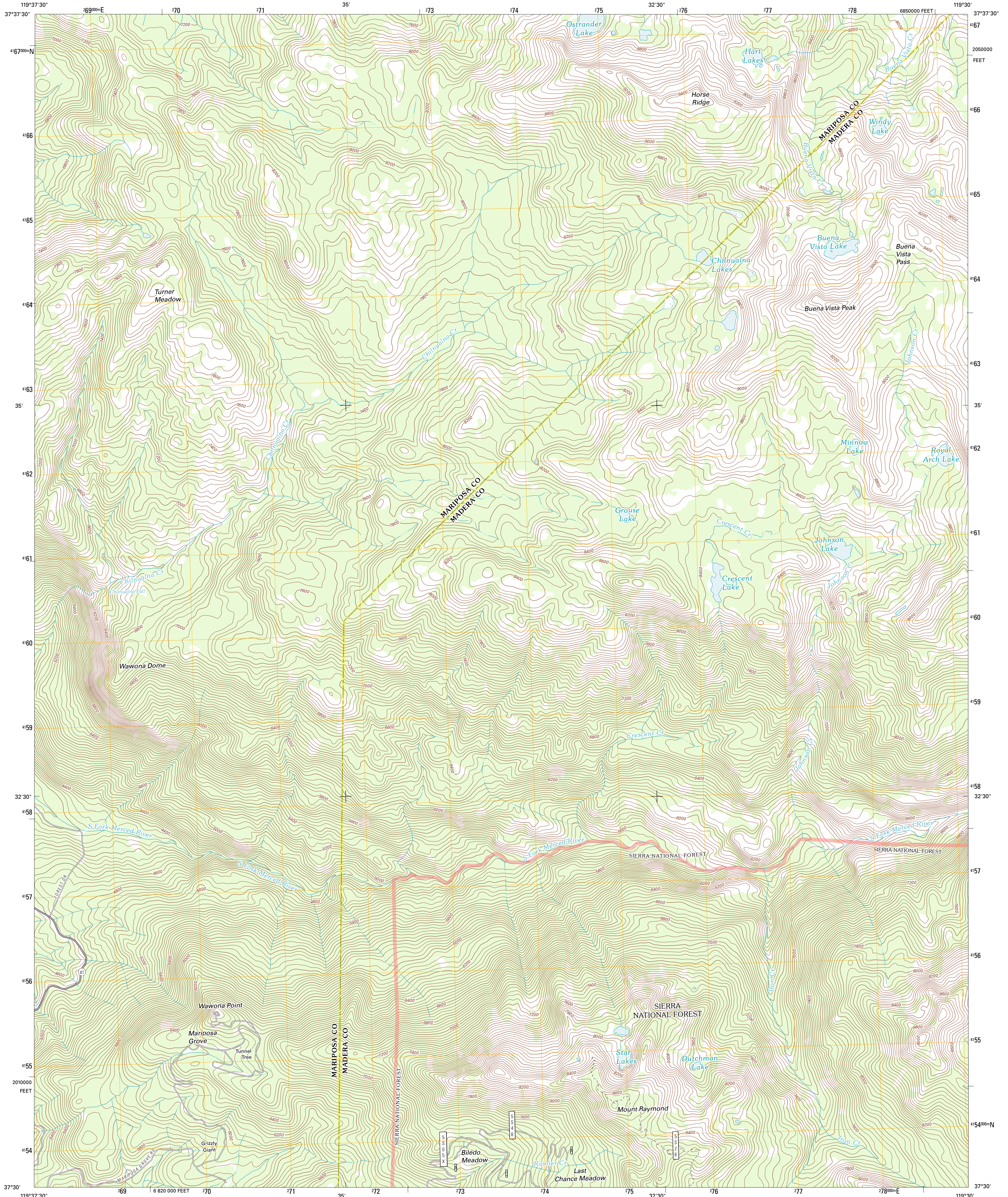




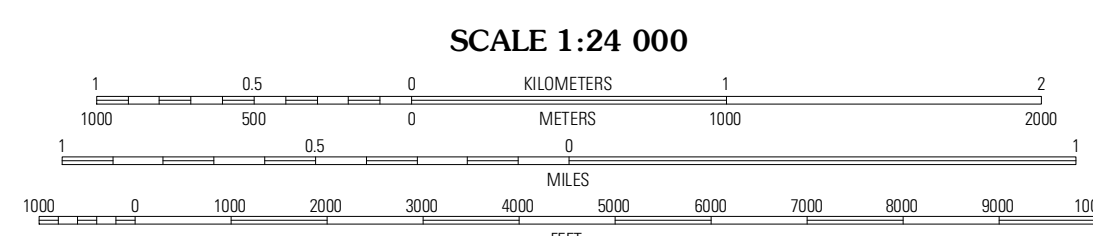
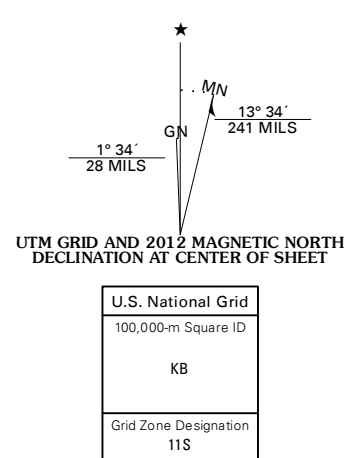
U.S. DEPARTMENT OF THE INTERIOR
U. S. GEOLOGICAL SURVEY



MARIPOSA GROVE QUADRANGLE
CALIFORNIA
7.5-MINUTE SERIES



Produced by the United States Geological Survey
North American Datum of 1983 (NAD83)
World Geodetic System of 1984 (WGS84). Projection and
1 000-meter grid: Universal Transverse Mercator, Zone 11S
10 000-foot ticks: California Coordinate System of 1983
(zone 3)



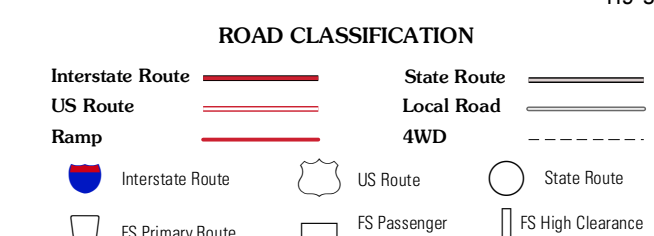
CONTOUR INTERVAL 40 FEET
NORTH AMERICAN VERTICAL DATUM OF 1988

This map was produced to conform with the
National Geospatial Program US Topo Product Standard, 2011.
A metadata file associated with this product is draft version 0.6.1



QUADRANGLE LOCATION

Ei Capitan	Half Dome	Merced Peak
Wawona	Mariposa Grove	Sing Peak
Fish Camp	White Chief Mountain	Little Shawnee Peak



Check with local Forest Service unit
for current travel conditions and restrictions.

MARIPOSA GROVE, CA
2012

ADJOINING 7.5' QUADRANGLES